



US005831530A

United States Patent [19]

[11] Patent Number: **5,831,530**

Lace et al.

[45] Date of Patent: ***Nov. 3, 1998**

[54] ANTI-THEFT VEHICLE SYSTEM

[75] Inventors: **Jeffrey J. Lace**, Huntington Beach;
Jack Durban, Mission Viejo, both of Calif.

[73] Assignee: **Lace Effect, LLC**

[*] Notice: The term of this patent shall not extend beyond the expiration date of Pat. No. 5,598,144.

[21] Appl. No.: **637,241**

[22] Filed: **Apr. 24, 1996**

Related U.S. Application Data

[63] Continuation-in-part of Ser. No. 366,886, Dec. 30, 1994, Pat. No. 5,598,144.

[51] Int. Cl.⁶ **G08B 13/14**

[52] U.S. Cl. **340/568**; 188/111; 280/33.994

[58] Field of Search 340/568, 539, 340/426, 933, 935; 280/33.994; 188/111, 162; 180/167; 307/10.2; 70/226, 228; 455/345

[56] References Cited

U.S. PATENT DOCUMENTS

1,928,750	10/1933	Apple et al.	188/162
1,968,584	7/1934	Apple	188/162
2,964,140	12/1960	Berezny	188/111
3,029,905	4/1962	Nowak	188/111
3,031,037	5/1962	Stollman	188/111
3,031,038	4/1962	Chait	188/111
3,117,655	1/1964	Skupas et al.	188/111
3,157,871	11/1964	Umanoff	340/539
3,495,688	2/1970	Isaacks	188/31
3,590,962	7/1971	Parker	188/111
3,652,103	3/1972	Higgs	280/33.994
3,717,225	2/1973	Rashbaum et al.	188/29
3,809,191	5/1974	Woodward	188/106 A
3,820,623	6/1974	Akashi et al.	180/167
4,242,668	12/1980	Herzog	340/539
4,338,594	7/1982	Holm	340/568
4,424,511	1/1984	Alberts, Jr.	73/646
4,472,706	9/1984	Hodge et al.	340/941
4,577,880	3/1986	Bianco	280/33.994

4,591,175	5/1986	Upton et al.	280/33.994
4,609,075	9/1986	Snedeker	188/5
4,683,461	7/1987	Torre	340/551
4,772,880	9/1988	Goldstein et al.	340/571
4,809,824	3/1989	Fargier et al.	188/72.8
4,868,544	9/1989	Havens	340/572
4,908,604	3/1990	Jacob	340/539
4,987,406	1/1991	Reid	340/539
4,990,890	2/1991	Newby	340/539
5,000,297	3/1991	Shaw et al.	188/156
5,053,768	10/1991	Dix, Jr.	340/988
5,194,844	3/1993	Zelda	340/426
5,283,550	2/1994	MacIntyre	340/539
5,315,290	5/1994	Moreno et al.	340/568
5,357,182	10/1994	Wolfe et al.	188/162 X
5,394,962	3/1995	Gray	188/1.12
5,432,412	7/1995	Harris et al.	280/33.994 X
5,465,986	11/1995	MacRae	280/33.994
5,576,691	11/1996	Coakley et al.	340/568
5,598,144	1/1997	Lace	340/568
5,607,030	3/1997	Swift et al.	188/1.12

FOREIGN PATENT DOCUMENTS

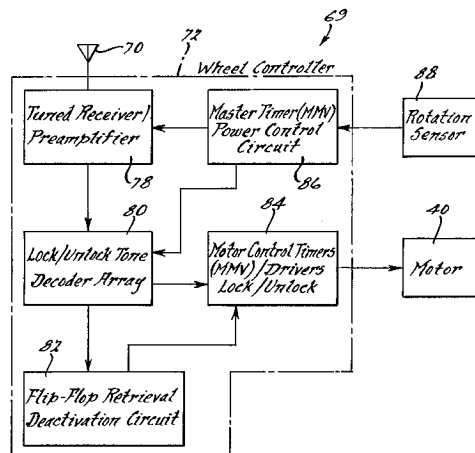
532472	3/1993	European Pat. Off.	280/33.994
3700411	7/1987	Germany .	
2137388	10/1984	United Kingdom .	
2266643	11/1993	United Kingdom .	
15476	9/1992	WIPO	280/33.994

Primary Examiner—Thomas J. Mullen, Jr.
Attorney, Agent, or Firm—Bliss McGlynn, P.C.

[57] ABSTRACT

An anti-theft vehicle system for a vehicle wheel having a rotational axis includes at least one inhibitor disposed within the vehicle wheel to selectively engage and disengage the vehicle wheel to resist and allow rotational movement of the vehicle wheel about its rotational axis. The anti-theft vehicle system also includes rotatable structure disposed within the vehicle wheel and cooperating with the at least one inhibitor for moving the at least one inhibitor between an engaged position and a disengaged position with respect to the vehicle wheel. The anti-theft vehicle system further includes a receiver operatively associated with the vehicle wheel to receive a predetermined signal to activate the rotatable structure to move the at least one inhibitor between the engaged position and disengaged position.

26 Claims, 5 Drawing Sheets



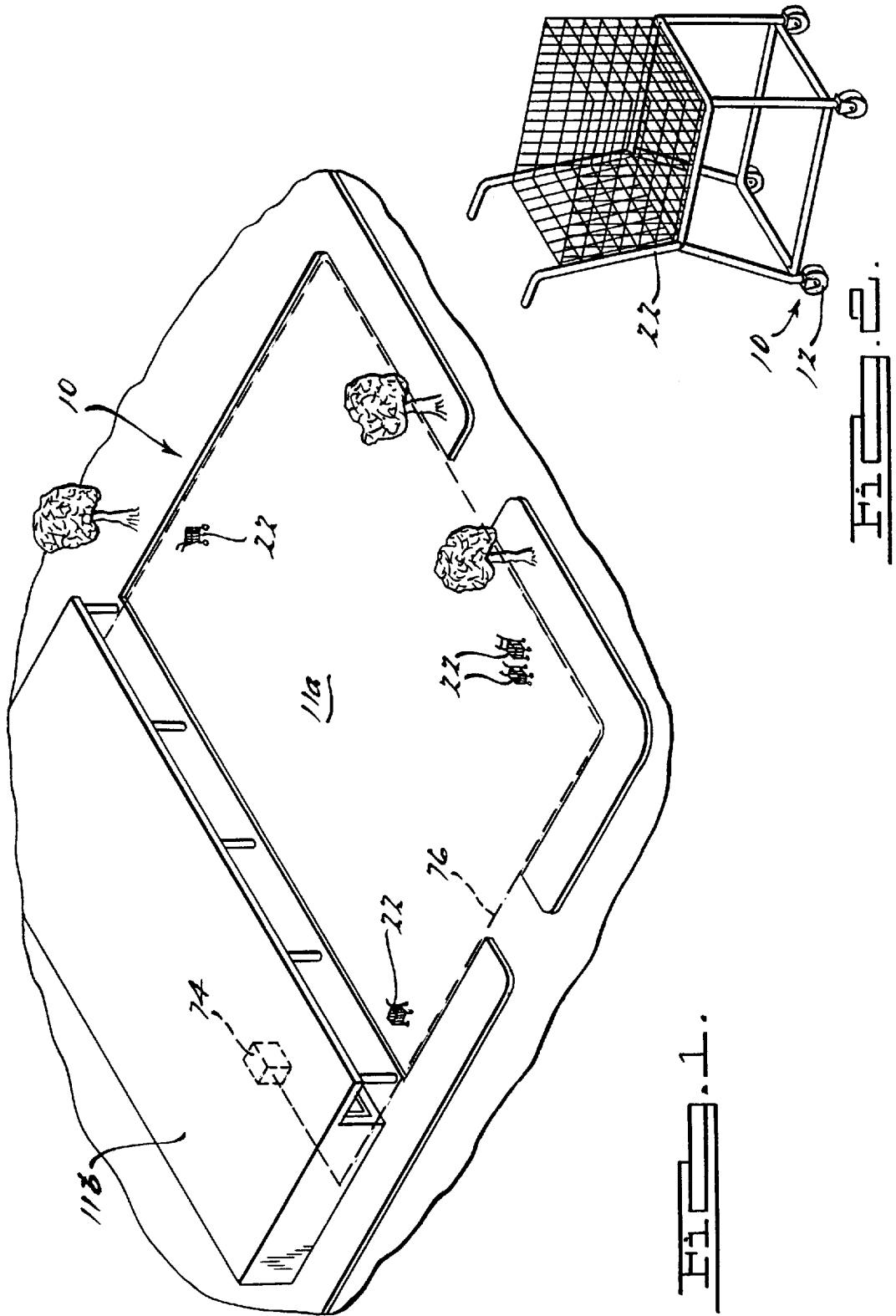
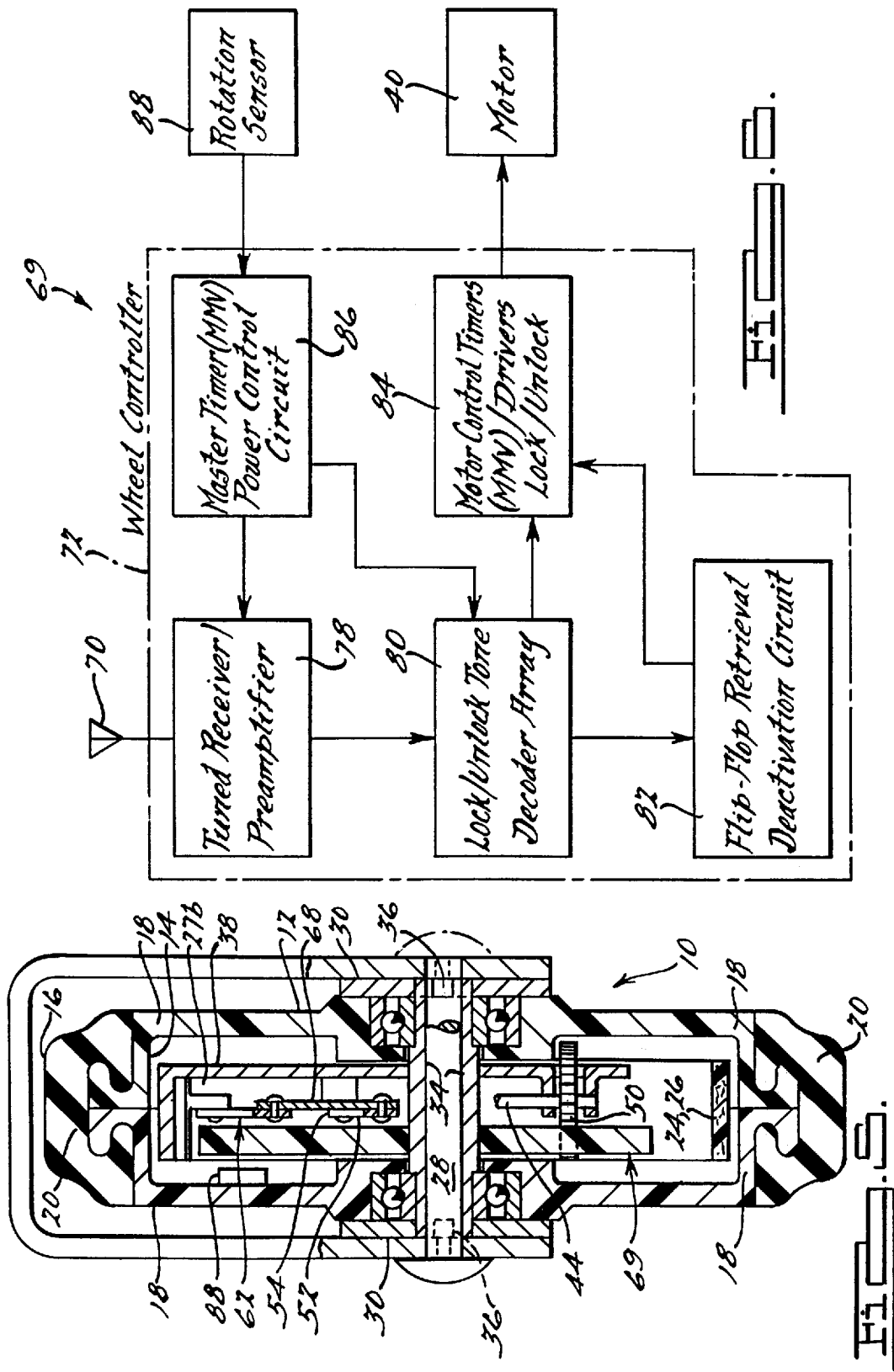
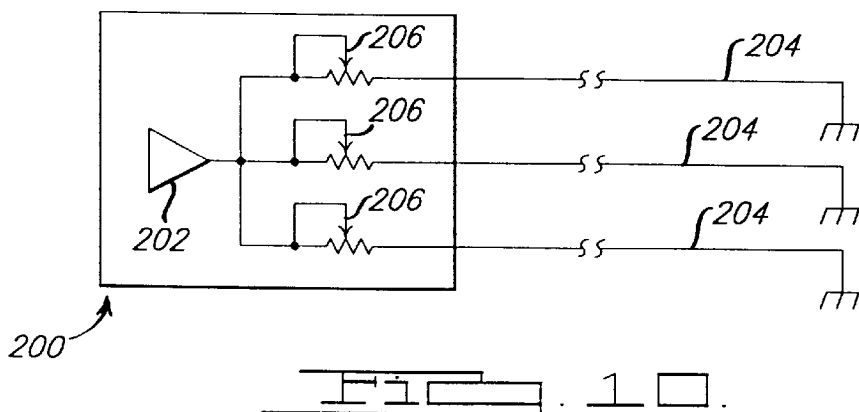
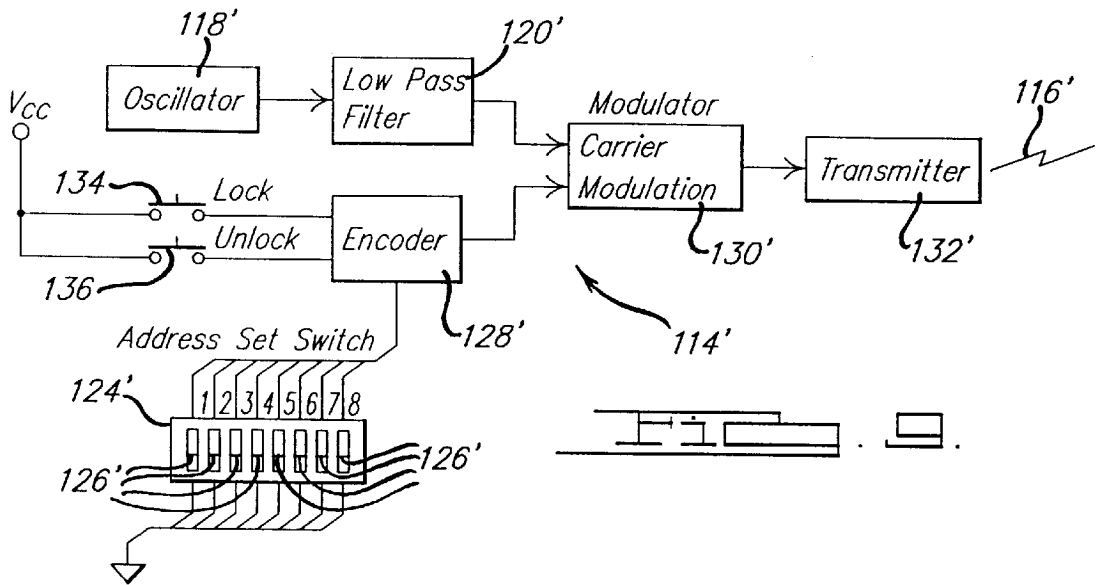
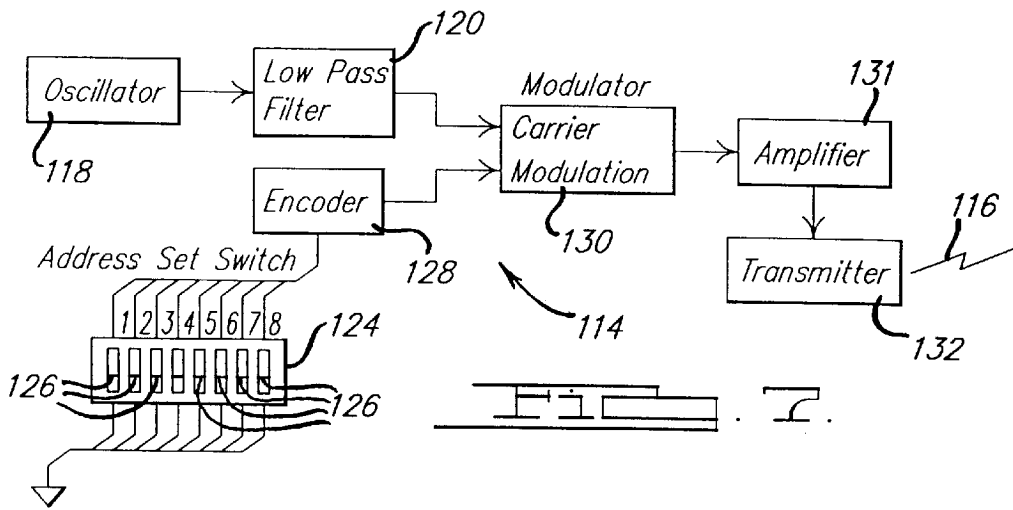
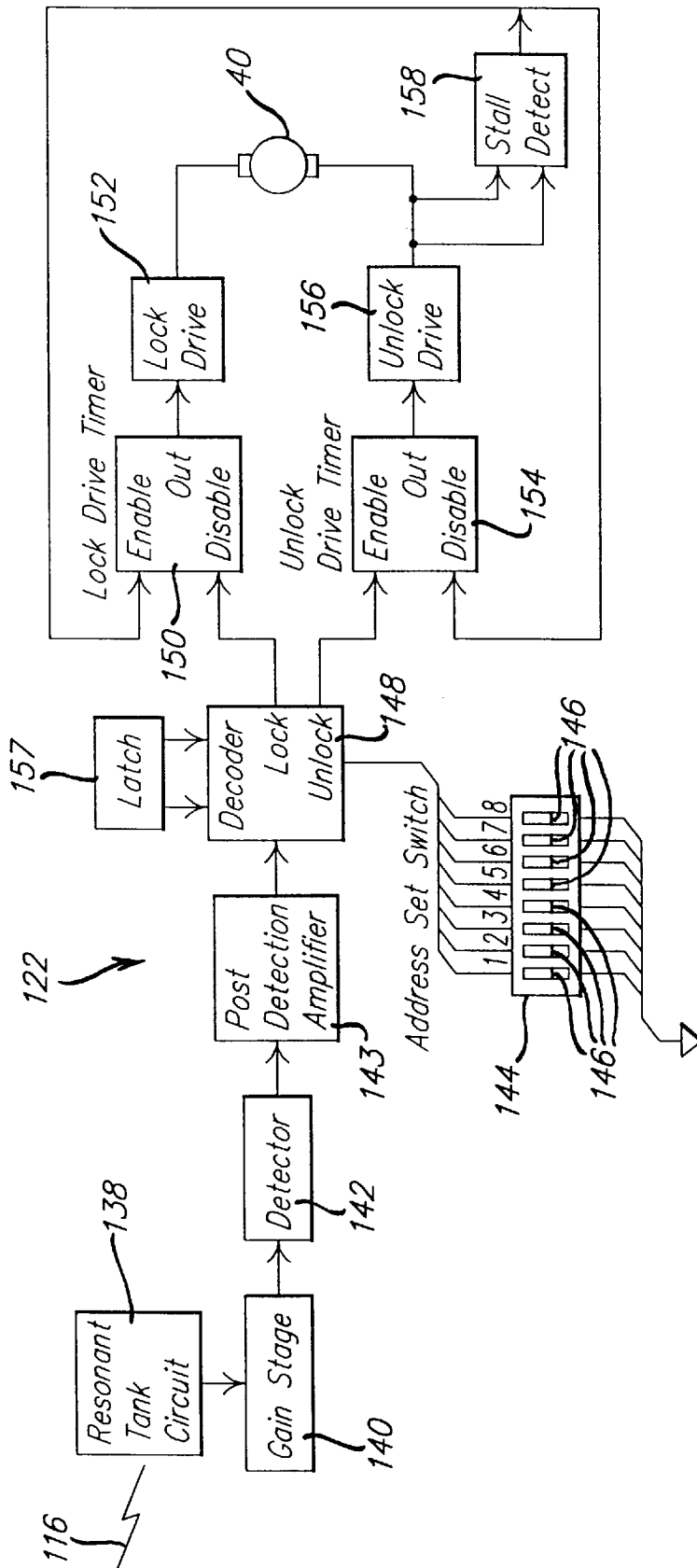


FIG. 1.

FIG. 2.







ANTI-THEFT VEHICLE SYSTEM**CROSS-REFERENCE TO RELATED APPLICATION(S)**

This application is a Continuation-In-Part of application U.S. Ser. No.: 08/366,886, filed Dec. 30, 1994, now U.S. Pat. No. 5,598,144.

BACKGROUND OF THE INVENTION**1. Field of the Invention**

The present invention relates generally to vehicles and, more particularly, to an are bounded vehicle system used to inhibit rotation of a vehicle wheel outside a predetermined spatial perimeter to mitigate the theft of vehicles or limit the travel thereof to within a specific boundary.

2. Description of the Related Art

It is sometimes desired to contain a vehicle within a predetermined spatial boundary or perimeter. In particular, retail stores are attempting to reduce the amount of lost vehicles such as shopping carts, which are either stolen or taken out of the normal bounds of the stores and not returned.

Accordingly, U.S. Pat. No. 5,194,844 to Zelda discloses a vehicle theft prevention system which inhibits the use of a shopping cart once it is moved outside a boundary. This patented system includes an electronic wire that extends around and defines a perimeter of normal operating space which is used by operators of a store's shopping carts. The electronic wire produces an electromagnetic field which is sensed by a sensor located adjacent one wheel of the shopping cart. The sensor sends a signal to a motor which moves a brake pad against the wheel of the shopping cart. Two limit switches are used to stop the motor when the motor has either moved the brake pad into or out of engagement with the wheel of the shopping cart.

One disadvantage of the above system is that it is relatively expensive because the motor must be large and two limit switches are needed. Another disadvantage of the above system is that an asymmetric time-variant wave form is used for the electromagnetic field which is undesired.

SUMMARY OF THE INVENTION

It is, therefore, one object of the present invention to provide an anti-theft vehicle system for vehicles.

It is another object of the present invention to provide an anti-theft vehicle system for vehicles such as shopping carts, toys, wheeled inventory, and industrial forklifts.

It is yet another object of the present invention to provide an anti-theft vehicle system for a vehicle wheel to prevent an operator from moving the vehicle outside a predetermined spatial perimeter.

It is still another object of the present invention to provide an anti-theft vehicle system for a shopping cart wheel which is inexpensive and effective at making it difficult for an operator to move the shopping cart out of a predetermined operating area of a retail store.

To achieve the foregoing objects, the present invention is an anti-theft vehicle system for a vehicle wheel having a rotational axis. The anti-theft vehicle system includes at least one inhibitor disposed within the vehicle wheel to selectively engage and disengage the vehicle wheel to resist and allow rotational movement of the vehicle wheel about its rotational axis. The anti-theft vehicle system also includes rotatable means disposed within the vehicle wheel

and cooperating with the inhibitor for moving the inhibitor between an engaged position and a disengaged position with the vehicle wheel. The anti-theft vehicle system further includes a receiver operatively associated with the vehicle wheel to receive a predetermined signal to actuate the rotatable means to move the at least one inhibitor between the engaged position and disengaged position.

One advantage of the present invention is that an anti-theft vehicle system is provided for vehicles such as shopping carts, toys, wheeled inventory, and industrial forklifts. Another advantage of the present invention is that the anti-theft vehicle system provides a vehicle wheel which deters an operator from moving the vehicle outside a predetermined spatial perimeter. Yet another advantage of the present invention is that the anti-theft vehicle system provides a cost effective vehicle wheel to deter operators from taking shopping carts out of a retail store's shopping cart boundary by preventing the vehicle wheel from rotating. Still another advantage of the present invention is that the anti-theft vehicle system provides a one-piece brake, springs and component mounting area for the vehicle wheel. A further advantage of the present invention is that the anti-theft vehicle system is self-energizing in both directions. Yet a further advantage of the present invention is that the anti-theft vehicle system provides a linkage overrun for position lock of the vehicle wheel. Still a further advantage of the present invention is that the anti-theft vehicle system changes the angle of a thrust arm to maximize brake linkage efficiency.

Other objects, features and advantages of the present invention will be readily appreciated as the same becomes better understood after reading the subsequent description when considered in connection with the accompanying drawings.

BRIEF DESCRIPTION OF THE DRAWINGS

FIG. 1 is a perspective view of a anti-theft vehicle system, according to the present invention, illustrated in operational relationship with vehicles and a predetermined spatial perimeter.

FIG. 2 is a perspective view of a vehicle and the anti-theft vehicle system of FIG. 1.

FIG. 3 is an exploded view of a wheel of the vehicle and the anti-theft vehicle system of FIG. 2.

FIG. 4 is a sectional view taken along line 4—4 of FIG. 3.

FIG. 5 is a sectional view taken along line 5—5 of FIG. 4.

FIG. 6 is a schematic view of a control circuit of the anti-theft vehicle system of FIGS. 1 through 3.

FIG. 7 is a schematic view of a transmitting circuit, according to the present invention, of the anti-theft vehicle system of FIGS. 1 through 3.

FIG. 8 is a schematic view of another embodiment of a control circuit, according to the present invention, of the anti-theft vehicle system of FIGS. 1 through 3.

FIG. 9 is a schematic view of another embodiment, according to the present invention, of the transmitting circuit of FIG. 7.

FIG. 10 is a block view of an alternative embodiment, according to the present invention, of a multiple antenna driver.

DESCRIPTION OF THE PREFERRED EMBODIMENT(S)

Referring to FIG. 1, one embodiment of an anti-theft vehicle system 10, according to the present invention, is

shown in operational relationship with vehicles inside a predetermined spatial boundary. In one embodiment, the system 10 is used to prevent theft of vehicles such as shopping carts 22 from a predetermined spatial boundary or perimeter 11a of a retail store 11b. It should be appreciated that the system 10 may be used on other vehicles such as toys, wheeled inventory, industrial forklifts to prevent the same from exiting a predetermined spatial boundary.

As illustrated in FIGS. 2 through 5, the system 10 includes at least one wheel 12 for the vehicle embodiment of a shopping cart 22. The wheel 12 has an inner diameter 14 and an outer diameter 16 and a rotational axis A about which the wheel 12 rotates. The wheel 12 also has a housing or hub 18 and a surface engaging member 20. The surface engaging member 20 is made of a suitable material such as a plastic material. Preferably, the plastic material is a urethane material. The hub 18 may be fabricated from the same material as the surface engaging member 20. Preferably, the hub 18 is made of a plastic material such as ABS and secured to the surface engaging member 20.

The system 10 also includes at least one inhibitor 24 disposed within the wheel 12 to selectively engage the wheel 12 and prevent the wheel 12 from rotating about its rotational axis A. The inhibitor 24 is a partial cylindrical shaped brake pad which is forced against the inner diameter 14 or hub 18 of the wheel 12. In one embodiment, a second inhibitor 26 is disposed within the wheel 12 to selectively engage another portion of the hub 18 of the wheel 12. The second inhibitor 26 is also a partial cylindrical shaped brake pad which is forced against the inner diameter 14 of the wheel 12. The inhibitors 24, 26 are integral and made of one-piece. The inhibitors 24, 26 are fabricated from a plastic material, such as a glass reinforced nylon material, which has a memory quality to maintain the shape of the inhibitors 24, 26. The inhibitors 24, 26 have a spring 27a connected to an extension 27b which acts as a component mounting area. The memory quality of the plastic material for the springs 27a creates a spring-like force predisposing the inhibitors 24, 26 to disengage the wheel 12. It should be appreciated that the inhibitors 24, 26, springs 27a and extension 27b are fabricated as one-piece from the same material.

The system 10 further includes an axle pin or shaft 28 which acts as the rotational axis A for the wheel 12. The shaft 28 is made of a metal material such as steel. The system 10 also includes two waterproof bearings 30 and yoke lock plates 32 supported by the shaft 28. The yoke lock plates 32 have internal notches 33 which engage an axle 34 and prevent the axle 34, which rides along the shaft 28, from rotating. The yoke lock plates 32 also include tabs 36 which prevent the waterproof bearings 30 from rotating.

The system 10 includes an axle arm 38 securely mounted such as by welding about the axle 34. The axle arm 38 is a plate made of a metal material such as steel. The extension 27b is connected to the axle arm 38 by suitable means such as an adhesive. The system 10 also includes a motor 40 such as an electric motor mounted to the extension 27b of the inhibitors 24, 26 between the rotational axis A and the inner diameter 14. The motor 40 provides rotational movement independent of the movement of the wheel 12 along an axis defined by a motor shaft 42. The motor 40 receives power from a power source such as a battery 43 which is electrically connected to both the motor 40 and a wheel controller 72 to be described. It should be appreciated that the battery 43 is attached to the extension 27b of the inhibitors 24, 26 by suitable means.

The system 10 further includes a screw or worm gear 44 rotated by the motor 40 through a gear drive 46. The gear

drive 46 allows the motor 40 to be placed along side the worm gear 44, conserving space, and reduces the rotational speed of the worm gear 44. More specifically, the gear drive 46 includes a first gear 48 and a second gear 50 such that the second gear 50 has a larger diameter than the first gear 48. The first gear 48 is secured to the motor shaft 42 and rotates at a faster rate than the second gear 50 which is driven by the first gear 48. It should be appreciated that the gear drive 46 may use any number of gears and gear sizes depending on the size and motor speed requirements.

The system 10 also includes a drive arm or lever 52 connected to the axle arm 38. The lever 52 has a pivotal end 54 and a gear engaging end 56. The gear engaging end 56 receives the worm gear 44 and moves along the worm gear 44 as the worm gear 44 is rotated. The gear engaging end 56 includes a nut 58 for receiving the worm gear 44 therein and rides along the worm gear 44 as the nut 58 receives the threads 60 of the worm gear 44.

The lever 52 pivots about a pivot end 54 which is pivotally secured to the axle arm 38. When the lever 52 pivots about the pivot end 54, the inhibitors 24, 26 and the wheel 12 engage to prevent the rotational movement of the wheel 12. If, however, the inhibitors 24, 26 are already engaging the wheel 12, the motor 40 will reverse to pivot the lever 52 back toward the motor 40 to disengage the inhibitors 24, 26 from the wheel 12, allowing the wheel 12 to rotate along with the other wheels of the shopping cart 22.

The system 10 also includes a linkage, generally indicated at 62, to connect the inhibitors 24, 26 to the lever 52. The linkage 62 is connected to the lever 52 between the pivotal end 54 and the gear engaging end 56. The linkage 62 includes a first thrust arm or link 64 and a second thrust arm or link 66 which are pivotally moveable with respect to each other. The first and second links 64 and 66 are pivotally secured to each of the first and second inhibitors, 24 and 26, respectively.

The linkage 62 further includes a transfer arm or principle link 68 which is pivotally secured to the first and second links 64 and 66 and the lever 52. The movement allowed by the principle link 68 forces the first and second links 64 and 66 to move in opposite directions. When the two links 64, 66 move in opposite directions, the first and second inhibitors 24, 26 move in opposite directions, either into engagement or disengagement with the hub 18 of the wheel 12. Although not necessary, the first and second links 64 and 66 are identical in shape and move not only in opposite directions but with equal magnitude. Further, the cost of the system 10 is further reduced by having the first, second and principle links 64, 66 and 68 fabricated to the same shape and size. This reduces the cost of the system 10 further by reducing parts.

Referring to FIG. 6, the anti-theft vehicle system 10 includes a receiver or control circuit, generally shown at 69, for the system 10. The control circuit 69 is a circuit board overlay which is disposed within the hub 18 of the wheel 12. The control circuit 69 receives a predetermined perimeter signal to activate the motor 40 to move the inhibitors 24, 26 such that the inhibitors 24, 26 either engage or disengage the wheel 12. Preferably, the control circuit 69 includes an antenna 70 which receives the predetermined perimeter signal such as an RF signal created by a signal generator 74 to be described.

The control circuit 69 also includes a wheel controller 72 which receives the predetermined perimeter signal from the antenna 70 and is electrically connected between the antenna 70 and the motor 40. The wheel controller 72 selectively

activates the motor **40** based on the coded predetermined perimeter signal received from the antenna **70**. The predetermined perimeter signal is created by a signal generator **74** and buried wire cable **76** to be described and illustrated in FIG. 1.

The wheel controller **72** includes a tuned receiver **78** which receives the predetermined perimeter signal from the antenna **70**. The wheel controller **72** also includes a tone decoder **80** which receives the predetermined perimeter signal from the tuned receiver **78**. The tuned receiver **78** amplifies the predetermined perimeter signal and sends it to the tone decoder **80** for decoding. The wheel controller **72** also includes a flip flop retrieval deactivation circuit **82** and a motor controller timer **84**. The flip flop retrieval deactivation circuit **82** receives the predetermined perimeter signal once it has been decoded and determines which direction the motor **40** is to rotate the motor shaft **42**. The flip flop retrieval deactivation circuit **82** signals the motor controller timer **84** to operate the motor **40** dependent upon the signal received by the flip flop retrieval deactivation circuit **82** and the tone decoder **80**. The wheel controller **72** includes a master timer **86** which receives input from a rotation sensor **88** such as a magnet.

For example, the shopping cart **22** passes over the buried wire cable **76** to signify that the shopping cart **22** has passed either into or out of the predetermined spatial perimeter **11a** defined by the buried wire cable **76**. The flip flop retrieval deactivation circuit **82** receives the predetermined perimeter signal from the tuned receiver **78** stating the location of the shopping cart **22** has changed. The flip flop retrieval deactivation circuit **82** then determines whether the shopping cart **22** was inside or outside the buried wire cable **76** by determining whether the wheel **12** was rotating. From the rotation sensor **88**, determination of the rotation of the wheel **12** will determine whether the shopping cart **22** was inside or outside of the buried wire cable **76**. If the rotation sensor **88** produces no signal, the wheel **12** is not rotating and is already locked. Therefore, receiving a signal from the tuned receiver **78** will indicate that the shopping cart **22** has passed back over the predetermined spatial perimeter **11a** and into the allowed area for the shopping cart **22** to operate. The rotational state of the wheel **12** goes from a non-rotating state to a rotating state. If, however, the flip flop retrieval deactivation circuit **82** receives a signal from the tuned receiver **78** when the rotation sensor **88** is sending a signal indicating that the wheel **12** is rotating, it will be determined that the shopping cart **22** has moved to a location outside of the predetermined spatial perimeter defined by the buried wire cable **76**. As a result, the motor **40** will be activated such that the inhibitors **24**, **26** will abut the wheel hub **18** preventing the wheel **12** from rotating. Thus, the rotational state of the wheel **12** has gone from a rotating state to a non-rotating state.

The signal generator **74**, shown in FIG. 1, generates a square wave output having a low frequency cycle between 60 Hz and 1 kHz which is sent along the buried wire cable **76** and defines the predetermined spatial perimeter **11a**. As a result, the shopping cart **22** may operate inside the area defined by the predetermined spatial perimeter **11a**. It should be appreciated that the signal generator **74** may be any type of signal generator suitable to produce a signal which will pass along the entire length of the buried wire cable **76**.

Referring to FIG. 7, one embodiment of a transmitting circuit **114**, according to the present invention, is shown for the anti-theft vehicle system **10**. The transmitting circuit **114** generates a predetermined perimeter signal of magnetic flux, graphically represented by line **116**, defining the predeter-

mined spatial perimeter **11a** of an area such as a parking lot of a retail store **11b**. The transmitting circuit **114** includes an oscillator **118** for creating a carrier signal defining a carrier frequency at a fundamental frequency less than nine kilohertz (9.0 kHz). Preferably, the carrier signal is defined by a square wave. It should be appreciated that the square wave at a carrier frequency less than nine kilohertz (9.0 kHz) may have harmonics which are greater than nine kilohertz (9.0 kHz).

The transmitting circuit **114** also includes a low pass filter **120** which receives the carrier frequency created by the oscillator **118**. The low pass filter **120** eliminates all carrier harmonics other than the fundamental harmonic created by the signal defined by the carrier frequency which results in a sine wave. In another embodiment, the low pass filter **120** may be designed to allow the carrier harmonics other than the fundamental harmonic to pass therethrough and be received by a receiving circuit **122** to be described. It should be appreciated that the low pass filter **120**, which allows lower carrier harmonics to pass therethrough, permits a control circuit **122** to be described to couple and decode the lower carrier frequencies at one of the harmonics of the fundamental carrier harmonic. As a result, smaller electronic componentry can be used which allows for a more inexpensive receiving circuit **114** occupying less space.

The transmitting circuit **114** includes an address set switch **124** to identify the transmitting circuit **114**. The address set switch **124** couples the transmitting circuit **114** with each control circuit **122** to be described which may be utilized by the anti-theft vehicle system **10**. The address set switch **124** includes, in one embodiment, eight individual switches **126** which are preset by the operator of the anti-theft vehicle system **10** to insure the proper operation thereof. The transmitting circuit **114** also includes an encoder **128** which receives the output of the address set switch **124**. The encoder **128** is a digital encoder that establishes the address and engage (or disengage) command to be transmitted by the signal.

The transmitting circuit **114** further includes a modulator **130** and amplifier **131** which receives the output of the low pass filter **120** and the encoder **128**. The modulator **130** allows the digital encoder **128** to modulate the signal received by the low pass filter **120**. The amplifier **131** amplifies the signal received by the modulator **130**. The transmitting circuit **114** also includes a low impedance transmitter **132**. The transmitter **132** transmits the predetermined perimeter signal **116**. In one embodiment, the amplifier **131** is the transmitter which is also the antenna. In one embodiment, the transmitter **132** is a closed circuit or antenna of conducting material which surrounds an area such as the parking lot and defines the predetermined spatial perimeter **11a** for the shopping carts **22** to be contained within. It should be appreciated that the amplifier **131** must be able to provide enough current to drive the low impedance transmitter **132**.

Referring to FIG. 9, another embodiment of the transmitting circuit **114** is shown. Like primed numerals represent similar elements to that of the transmitting circuit **114** shown in FIG. 7. The transmitting circuit **114'** includes a remotely transportable or hand-held transmitter **132'** for transmitting the predetermined perimeter signal having the same carrier frequency discussed above. The transmitting circuit **114'** includes remote switches **134** and **136** to either lock or unlock the inhibitor **24** with the wheel **12** depending on the location of the shopping cart **22**. By way of example, if the shopping cart **22** is located out beyond the predetermined spatial perimeter **11a**, the anti-theft vehicle system **10** will

have locked the wheel 12 preventing the rotation thereof. The remotely transportable transmitter 132' can be transported to the shopping cart 22 to unlock the wheel 12 so that the shopping cart 22 may be pushed back within the predetermined spatial perimeter 11a.

Referring to FIG. 8, another embodiment 122, according to the present invention, of the control circuit 69 is shown and receives the predetermined perimeter signal 116. The control circuit 122 is a near field resonant receiver that detects and eventually decodes a pulse modulated magnetic field. Upon receiving the predetermined perimeter signal 116, the receiving circuit 122 sends a signal to activate the motor 40 to move the inhibitor 24 to engage or disengage the wheel 12. It should be appreciated that the control circuit 122 is disposed within the hub 18 of the wheel 12.

The control circuit 122 includes a resonant tank circuit 138 which eliminates reception by the control circuit 122 of all frequencies other than the frequency of the predetermined perimeter signal 116. The resonant tank circuit 138 is tuned to the specific harmonic, fundamental or otherwise, transmitted by the transmitting circuit 114. The resonant tank circuit 138 allows for the detection of the predetermined perimeter signal 116 without having to provide any radio frequency (RF) gain. The resonant tank circuit 138 includes a capacitor and an inductor (neither shown) connected in parallel. It should be appreciated other elements may be used to favor the predetermined perimeter space frequencies to be received. It should also be appreciated that the shopping cart 22 is used as an antenna to receive the predetermined perimeter signal transmitted by the transmitting circuit 114, 114' and prevent electromagnetically isolating the wheel 12 to bypass the anti-theft vehicle system 10.

The control circuit 122 also includes a gain stage circuit 140 electrically connected to the resonant tank circuit 138 and amplifies the predetermined perimeter signal 116 after the predetermined perimeter signal 116 has been received by the resonant tank circuit 138. The gain stage circuit 140 may be a simplified circuit because it is only receiving one harmonic of an oscillating signal due to the tuning of the resonant tank circuit 138. The gain stage circuit 140 amplifies the predetermined perimeter signal 116 by a predetermined amount such as nineteen decibels (19 db). The gain stage circuit 140 is configured as a linear mode amplifier that draws a predetermined current such as five microamps (5.0 μ A).

The control circuit 122 further includes a detector 142 which is electrically connected to the gain stage circuit 140. The detector 142 receives the predetermined perimeter signal 116 without the unwanted harmonics which are not received due to the specific tuning of the resonant tank circuit 138.

The control circuit 122 includes a post detection amplifier 143 for post detection gain. The post detection amplifier 143 is direct current (DC) coupled to the detector 142 to provide a ground source to an inverted input of a final gain stage to be described. This DC ground path causes the gain stage circuit 140 to invert the ground or zero potential signal to a maximum positive voltage signal. The positive voltage signal is then DC coupled to the post detection amplifier 143 which, in turn, inverts it again, back to a zero potential, prior to sending it to a decoder 148 to be described.

The control circuit 122 also includes an address set switch 144 similar to that of the transmitting circuit 114. The address set switch 144 includes a plurality of individual switches 146 which are set to a specific code or combination to match the individual switches 126 of the transmitting circuit 114.

The control circuit 122 includes a decoder 148 which is maintained in a standby mode when the potential signal is zero. When the potential signal is high, the decoder 148 matches the predetermined perimeter signal 116 from the post detection amplifier with that of the predetermined perimeter signal 116 created by the address set switch 144 to determine whether the signal is from the transmitting circuit 114. In one embodiment, the decoder 148 checks the predetermined perimeter signal 116 three times. If the decoder 148 determines that it has received a valid signal from the transmitting circuit 114, the decoder 148 then determines whether the wheel 12 is to be locked or unlocked.

The control circuit 122 includes a latch 157 to reset the decoder 148 to prevent redundant lock and unlock actuations. The latch 157 receives a signal from the decoder 148. The latch 157 is a flip flop which will allow a lock signal to pass to a lock drive timer 150 only if the immediately preceding signal was not a lock signal. This prevents redundant lock signals unnecessarily reducing the battery potential. Likewise, the latch 157 will prevent an unlock signal from passing to an unlock drive timer 154 if it was immediately preceded by an unlock signal. The latch 157 prevents signals resulting from the resonant tank circuit 138 being physically close to the antenna 76. The latch 157 includes three CMOS transistors (none shown).

The anti-theft vehicle system 10 further includes a stall detecting circuit 158 which detects when the motor 40 stops the rotational movement. The stall detect circuit 158 will override the signal sent by the decoder 148 and prematurely terminate the rotation of the motor 40 by the lock drive 152 or the unlock drive 156. The stall detecting circuit 158 determines when the inhibitor 24 is in its fully retracted position or its fully extended position against the wheel 12.

Referring to FIG. 20, the transmitter is generally indicated at 200. The transmitter 200 is shown having an amplifier 202. The output of the amplifier 202 is sent along a plurality of antenna branches 204. These antenna branches 204 may be configured in a manner suitable for the space about which the antenna branches 204 need to surround. The level of signal output is controlled by a potentiometer 206.

The present invention has been described in an illustrative manner. It is to be understood that the terminology which has been used is intended to be in the nature of words of description rather than of limitation.

Many modifications and variations of the present invention are possible in light of the above teachings. Therefore, within the scope of the appended claims, the present invention may be practiced otherwise than as specifically described.

What is claimed is:

1. An anti-theft vehicle system for a vehicle wheel having a rotational axis comprising:
 - at least one inhibitor disposed within the vehicle wheel to selectively engage and disengage the vehicle wheel to resist and allow rotational movement of the vehicle wheel about the rotational axis;
 - a rotatable structure disposed within the vehicle wheel and cooperating with said at least one inhibitor for moving said at least one inhibitor between an engaged position and a disengaged position with respect to the vehicle wheel; and
 - a receiver mounted within the vehicle wheel to receive a predetermined signal to activate said rotatable structure to move said at least one inhibitor between said engaged position and said disengaged position.
2. An anti-theft vehicle system as set forth in claim 1 wherein said rotatable structure includes an electric motor to provide the rotational movement.

3. An anti-theft vehicle system for a vehicle wheel having a rotational axis comprising:

at least one inhibitor disposed within the vehicle wheel to selectively engage and disengage the vehicle wheel to resist and allow rotational movement of the vehicle wheel about the rotational axis;

rotatable means disposed within the vehicle wheel and cooperating with said at least one inhibitor for moving said at least one inhibitor between an engaged position and a disengaged position with respect to the vehicle wheel;

a receiver operatively associated with the vehicle wheel to receive a predetermined signal to activate said rotatable means to move said at least one inhibitor between said engaged position and said disengaged position; and wherein said receiver includes a resonant tank circuit to eliminate reception by said receiver of all frequencies other than frequencies of the predetermined signal.

4. An anti-theft vehicle system as set forth in claim 3 wherein said receiver includes a detector electrically connected to said resonant tank circuit to receive the predetermined signal.

5. An anti-theft vehicle system as set forth in claim 4 wherein said receiver includes a gain stage circuit electrically connected to said detector to amplify the predetermined signal after the predetermined signal has been received and detected.

6. An anti-theft vehicle system for a vehicle wheel having a rotational axis comprising:

at least one inhibitor disposed within the vehicle wheel to selectively engage and disengage the vehicle wheel to resist and allow rotational movement of the vehicle wheel about the rotational axis;

rotatable means disposed within the vehicle wheel and cooperating with said at least one inhibitor for moving said at least one inhibitor between an engaged position and a disengaged position with respect to the vehicle wheel;

a receiver operatively associated with the vehicle wheel to receive a predetermined signal to activate said rotatable means to move said at least one inhibitor between said engaged position and said disengaged position;

said rotatable means including an electric motor to provide the rotational movement; and

a stall detecting circuit to detect when said electric motor stops the rotational movement.

7. An anti-theft vehicle system for a vehicle wheel having a rotational axis comprising:

at least one inhibitor disposed within the vehicle wheel to selectively engage and disengage the vehicle wheel to resist and allow rotational movement of the vehicle wheel about the rotational axis;

rotatable means disposed within the vehicle wheel and cooperating with said at least one inhibitor for moving said at least one inhibitor between an engaged position and a disengaged position with respect to the vehicle wheel;

a receiver operatively associated with the vehicle wheel to receive a predetermined signal to activate said rotatable means to move said at least one inhibitor between said engaged position and said disengaged position; and a transmitting circuit for transmitting the predetermined signal.

8. An anti-theft vehicle system for a vehicle wheel having a rotational axis comprising:

at least one inhibitor disposed within the vehicle wheel to selectively engage and disengage the vehicle wheel to resist and allow rotational movement of the vehicle wheel about the rotational axis;

rotatable means disposed within the vehicle wheel and cooperating with said at least one inhibitor for moving said at least one inhibitor between an engaged position and a disengaged position with respect to the vehicle wheel;

a transmitting circuit for generating a predetermined signal defining a predetermined spatial perimeter; and a receiving circuit for receiving the predetermined signal to activate said rotatable means to move said at least one inhibitor between said engaged position and said disengaged position when the vehicle wheel passes the predetermined spatial perimeter.

9. An anti-theft vehicle system as set forth in claim 8 wherein said transmitting circuit includes an oscillator to create at least one carrier frequency.

10. An anti-theft vehicle system as set forth in claim 9 wherein said oscillator creates the at least one carrier frequency at a frequency less than nine kilohertz.

11. An anti-theft vehicle system as set forth in claim 8 wherein said transmitting circuit includes an antenna of electrically conductive material to transmit the predetermined signal along and define the predetermined spatial perimeter.

12. An anti-theft vehicle system as set forth in claim 8 wherein said transmitting circuit includes a remotely transmittable transmitter for transmitting the predetermined signal to move said at least one inhibitor between said engaged position and disengaged position.

13. An anti-theft vehicle system as set forth in claim 8 wherein said transmitting circuit includes a low pass filter to eliminate carrier harmonics of the predetermined signal.

14. An anti-theft vehicle system as set forth in claim 8 wherein said transmitting circuit includes a low pass filter to allow carrier harmonics of the predetermined signal to pass therethrough to be received by said receiving circuit.

15. An anti-theft vehicle system for a vehicle comprising: at least one vehicle wheel;

at least one inhibitor disposed within the at least one vehicle wheel to selectively engage and disengage the at least one vehicle wheel to resist and allow rotational movement of the at least one vehicle wheel;

a rotatable structure disposed within the at least one vehicle wheel and cooperating with said at least one inhibitor for moving said at least one inhibitor between an engaged position and a disengaged position with respect to the at least one vehicle wheel; and

a receiving circuit disposed within the at least one vehicle wheel to receive a predetermined signal to activate said rotatable structure to move said at least one inhibitor between said engaged position and said disengaged position.

16. An anti-theft vehicle system as set forth in claim 15 including a transmitting circuit having a low pass filter to eliminate carrier harmonics of the predetermined signal.

17. An anti-theft vehicle system for a vehicle comprising: at least one vehicle wheel;

at least one inhibitor disposed within the at least one vehicle wheel to selectively engage and disengage the at least one vehicle wheel to resist and allow rotational movement of the at least one vehicle wheel;

a rotatable structure disposed within the at least one vehicle wheel and cooperating with said at least one

11

inhibitor for moving said at least one inhibitor between an engaged position and a disengaged position with respect to the at least one vehicle wheel;

a receiving circuit operatively associated with the at least one vehicle wheel to receive a predetermined signal to activate said rotatable structure to move said at least one inhibitor between said engaged position and said disengaged position; and

wherein said receiving circuit includes a resonant tank circuit to eliminate reception by said receiving circuit of all frequencies other than frequencies of the predetermined signal.

18. An anti-theft vehicle system as set forth in claim 17 wherein said receiving circuit includes a detector electrically connected to said resonant tank circuit to receive the predetermined signal.

19. An anti-theft vehicle system as set forth in claim 18 wherein said receiving circuit includes a gain stage circuit electrically connected to said detector to amplify the predetermined signal after the predetermined signal has been received and detected.

20. An anti-theft vehicle system for a vehicle comprising: at least one vehicle wheel;

at least one inhibitor disposed within the at least one vehicle wheel to selectively engage and disengage the at least one vehicle wheel to resist and allow rotational movement of the at least one vehicle wheel;

a rotatable structure disposed within the at least one vehicle wheel and cooperating with said at least one inhibitor for moving said at least one inhibitor between an engaged position and a disengaged position with respect to the at least one vehicle wheel;

a receiving circuit operatively associated with the at least one vehicle wheel to receive a predetermined signal to activate said rotatable structure to move said at least one inhibitor between said engaged position and said disengaged position; and

a transmitting circuit for transmitting the predetermined signal and including an oscillator to create at least one carrier frequency of the predetermined signal.

21. An anti-theft vehicle system for a vehicle comprising: at least one vehicle wheel;

at least one inhibitor disposed within the at least one vehicle wheel to selectively engage and disengage the at least one vehicle wheel to resist and allow rotational movement of the at least one vehicle wheel;

a rotatable structure disposed within the at least one vehicle wheel and cooperating with said at least one inhibitor for moving said at least one inhibitor between an engaged position and a disengaged position with respect to the at least one vehicle wheel;

a receiving circuit operatively associated with the at least one vehicle wheel to receive a predetermined signal to activate said rotatable structure to move said at least one inhibitor between said engaged position and said disengaged position; and

a transmitting circuit including an antenna of electrically conductive material to transmit the predetermined signal along and define the predetermined spatial perimeter.

22. An anti-theft vehicle system for a vehicle comprising: at least one vehicle wheel;

at least one inhibitor disposed within the at least one vehicle wheel to selectively engage and disengage the

12

at least one vehicle wheel to resist and allow rotational movement of the at least one vehicle wheel;

a rotatable structure disposed within the at least one vehicle wheel and cooperating with said at least one inhibitor for moving said at least one inhibitor between an engaged position and a disengaged position with respect to the at least one vehicle wheel;

a receiving circuit operatively associated with the at least one vehicle wheel to receive a predetermined signal to activate said rotatable structure to move said at least one inhibitor between said engaged position and said disengaged position; and

a transmitting circuit including a remotely transportable transmitter for transmitting the signal to move said at least one inhibitor between said engaged position and said disengaged position.

23. An anti-theft vehicle system for a vehicle comprising: at least one vehicle wheel;

at least one inhibitor disposed within the at least one vehicle wheel to selectively engage and disengage the at least one vehicle wheel to resist and allow rotational movement of the at least one vehicle wheel;

a rotatable structure disposed within the at least one vehicle wheel and cooperating with said at least one inhibitor for moving said at least one inhibitor between an engaged position and a disengaged position with respect to the at least one vehicle wheel;

a receiving circuit operatively associated with the at least one vehicle wheel to receive a predetermined signal to activate said rotatable structure to move said at least one inhibitor between said engaged position and said disengaged position; and

a transmitting circuit including a low pass filter to allow carrier harmonics of the predetermined signal to pass therethrough to be received by said receiving circuit.

24. An anti-theft vehicle system for a vehicle comprising: at least one vehicle wheel;

at least one inhibitor disposed within the at least one vehicle wheel to selectively engage and disengage the at least one vehicle wheel to resist and allow rotational movement of the at least one vehicle wheel;

a structure disposed within the at least one vehicle wheel and cooperating with said at least one inhibitor for moving said at least one inhibitor between an engaged position and a disengaged position with respect to the at least one vehicle wheel; and

a receiving circuit disposed within the at least one vehicle wheel to receive a predetermined signal having a frequency of less than nine kilohertz to activate said structure to move said at least one inhibitor between said engaged position and said disengaged position.

25. An anti-theft vehicle system for a vehicle comprising: at least one vehicle wheel;

at least one inhibitor disposed within the at least one vehicle wheel to selectively engage and disengage the at least one vehicle wheel to resist and allow rotational movement of the at least one vehicle wheel;

a structure disposed within the at least one vehicle wheel and cooperating with said at least one inhibitor for moving said at least one inhibitor between an engaged position and a disengaged position with respect to the at least one vehicle wheel;

a receiving circuit operatively associated with the at least one vehicle wheel to receive a predetermined signal to

13

activate said structure to move said at least one inhibitor between said engaged position and said disengaged position; and

a transmitting circuit for transmitting the predetermined signal and including an oscillator to create at least one carrier frequency of the predetermined signal of less than nine kilohertz.

26. An anti-theft vehicle system for a vehicle comprising: at least one vehicle wheel;

at least one inhibitor disposed within the at least one vehicle wheel to selectively engage and disengage the at least one vehicle wheel to resist and allow rotational movement of the at least one vehicle wheel;

14

a rotatable structure disposed within the at least one vehicle wheel and cooperating with said at least one inhibitor for moving said at least one inhibitor between an engaged position and a disengaged position with respect to the at least one vehicle wheel; and

a receiving circuit disposed within the at least one vehicle wheel to receive a predetermined signal having a frequency of less than nine kilohertz to activate said rotatable structure to move said at least one inhibitor between said engaged position and said disengaged position.

* * * * *

UNITED STATES PATENT AND TRADEMARK OFFICE
CERTIFICATE OF CORRECTION

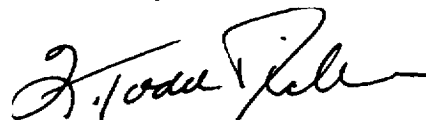
PATENT NO. : 5,831,530
DATED : November 3, 1998
INVENTOR(S) : Jeffrey J. Lace et al.

It is certified that error appears in the above-identified patent and that said Letters Patent is hereby corrected as shown below:

Column 10, line 61 (claim 17, line 2), delete ":" and insert therefor
--;--.

Column 11, line 44 (claim 21, line 2), delete ":" and insert therefor
--;--.

Signed and Sealed this
Second Day of March, 1999



Attest:

Q. TODD DICKINSON

Attesting Officer

Acting Commissioner of Patents and Trademarks